

TERRACE TOWNES

1930 SQUARE FEET

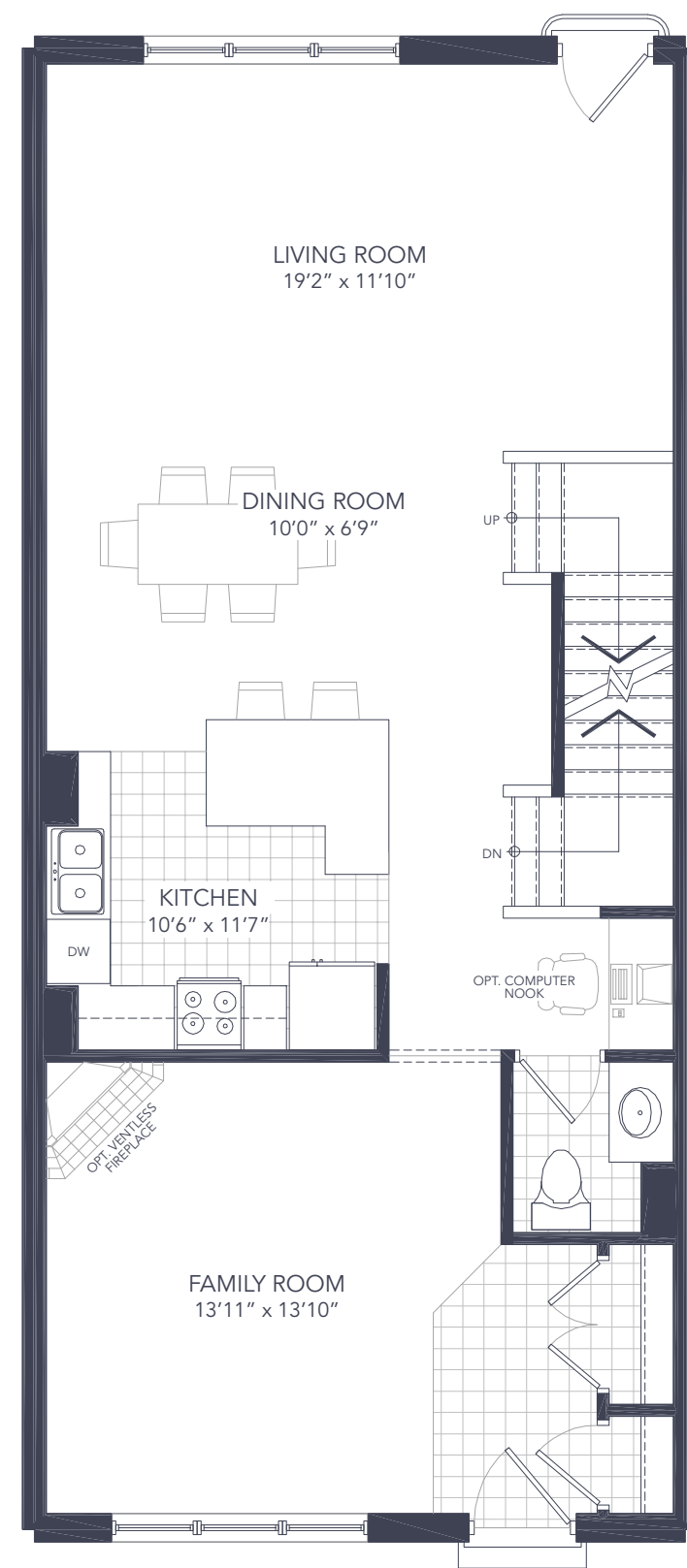


TERRACE TOWNE (COURTYARD ELEVATION)

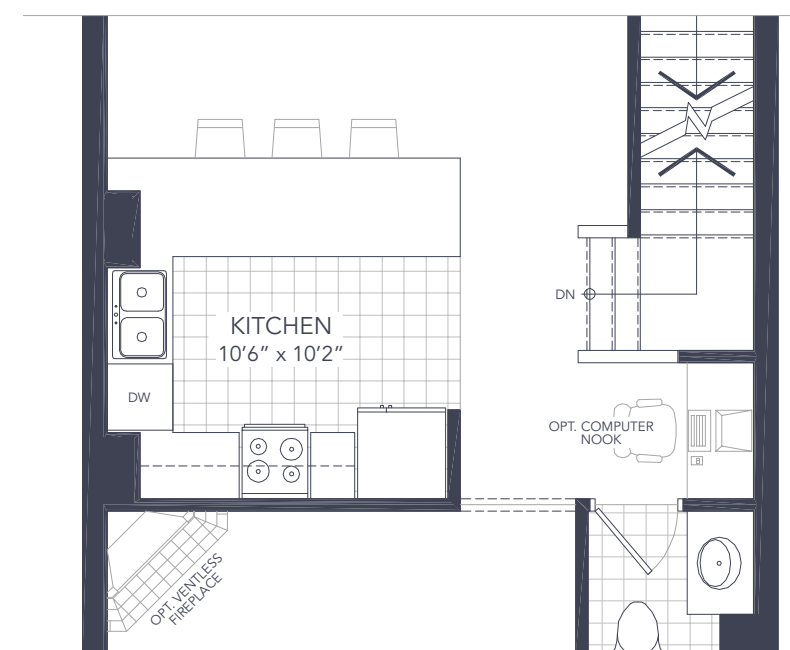
Stewart Mill's 14 Terrace Townes are another unique housing option for new homebuyers. The Stewart Townes site offers a rear laneway enabling the townhomes to have their own freestanding double garage! Between the garage and the townhome there is a landscaped terrace with lush planting for your own outdoor area.

The exterior look is very historic and reminiscent of the many successful warehouse/row house conversions in heritage communities. The garages are upgraded coach house inspired, with dormers and carriage-style doors and hardware. There is even plenty of storage in the garages peaked ceiling.

Inside, homeowners will enjoy spacious main floor living/dining areas and well planned upper layouts with 2-3 bedrooms, bath and laundry.

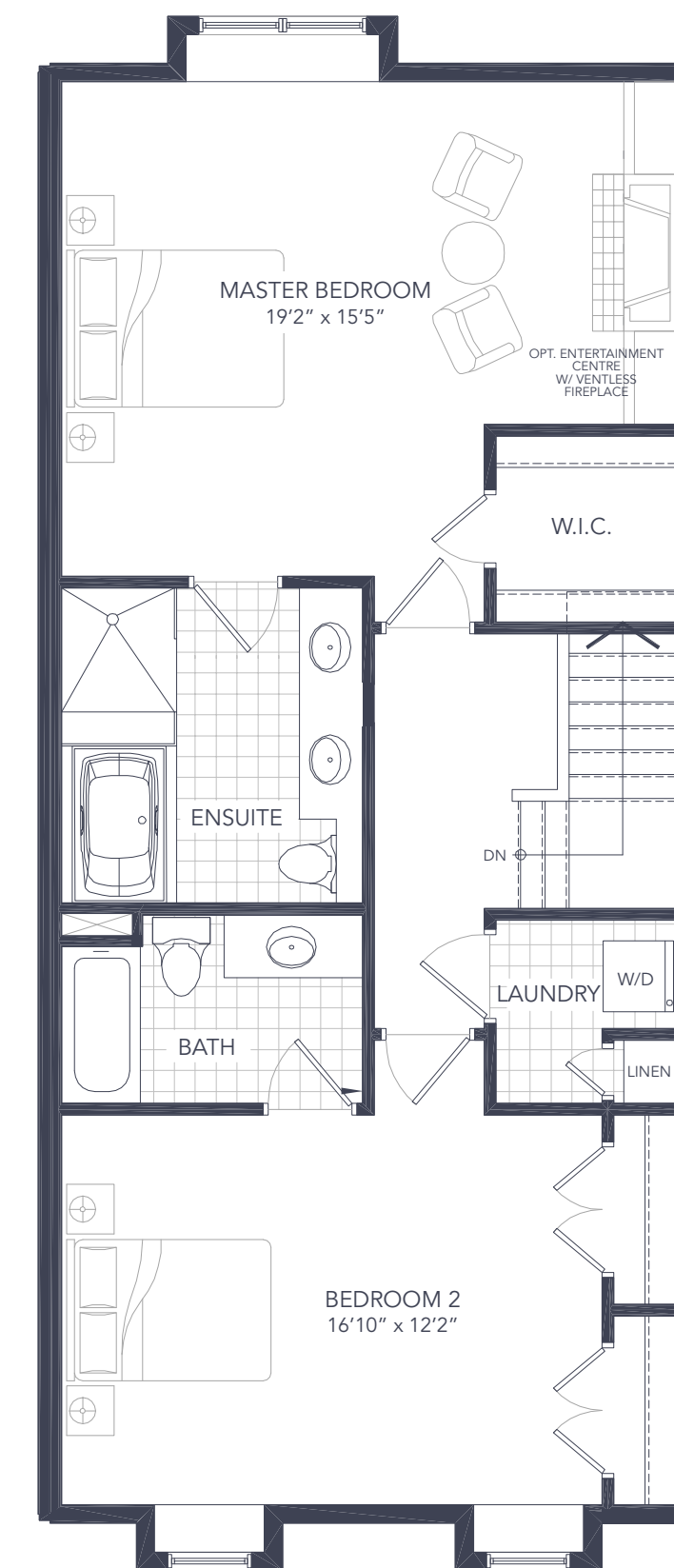


GROUND LEVEL



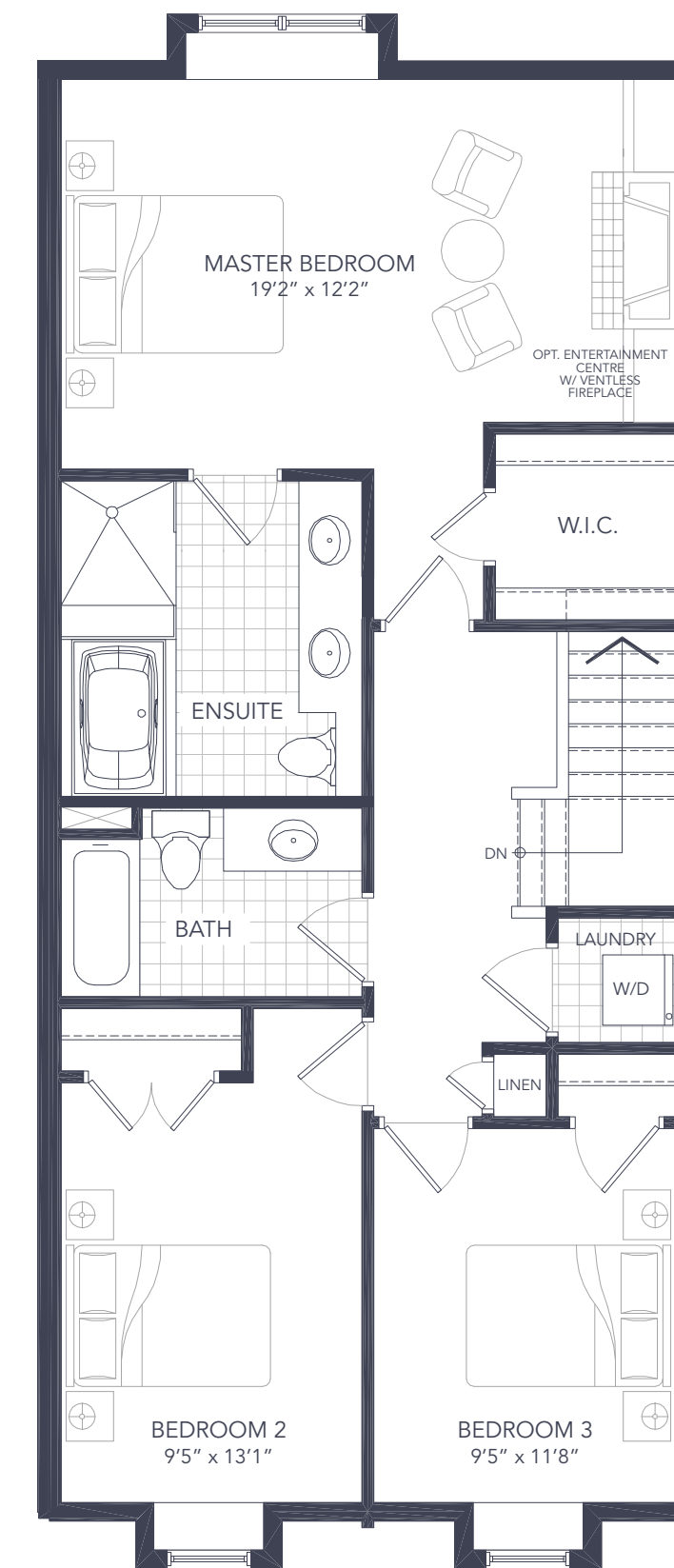
GROUND LEVEL w/ opt. kitchen

Enter via your landscaped area to a foyer with double closets and a Family Room ideal for entertaining. The rear of the home offers an open-concept living area loaded with a smart designed Kitchen, chef's island, computer alcove and combined dining and living area. Enjoy the large window and Juliet Balcony overlooking the community courtyard.



SECOND LEVEL - 2 BEDROOM

Step up to stylish private quarters with a luxurious two-bedroom layout option. The Master Bedroom offers a generous space with window-bench seating, a walk-in-closet and a 5-piece Ensuite. The second, large bedroom offers double closets and a large 3-piece Ensuite.



SECOND LEVEL - 3 BEDROOM

If a traditional three-bedroom option is what you're looking for, this plan offers it all! The Master Bedroom offers a generous space with window-bench seating, a walk-in-closet and a 5-piece Ensuite. Two spacious bedrooms share a main bath.