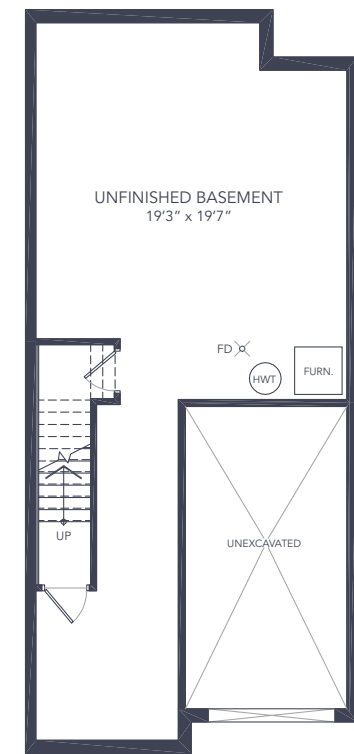
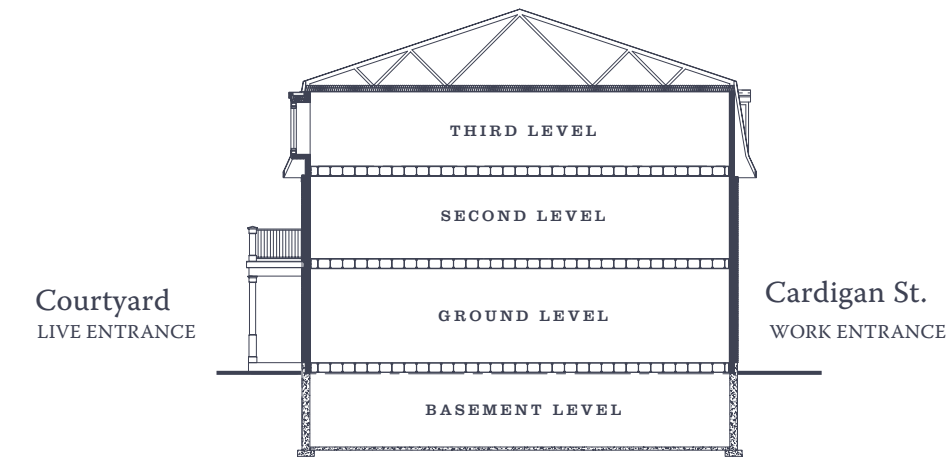
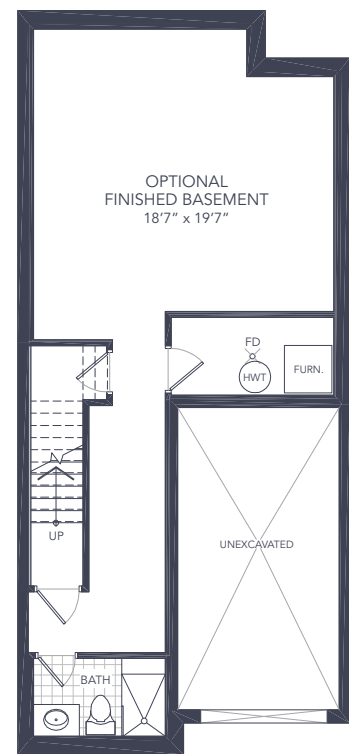


FFLEX TOWNHES

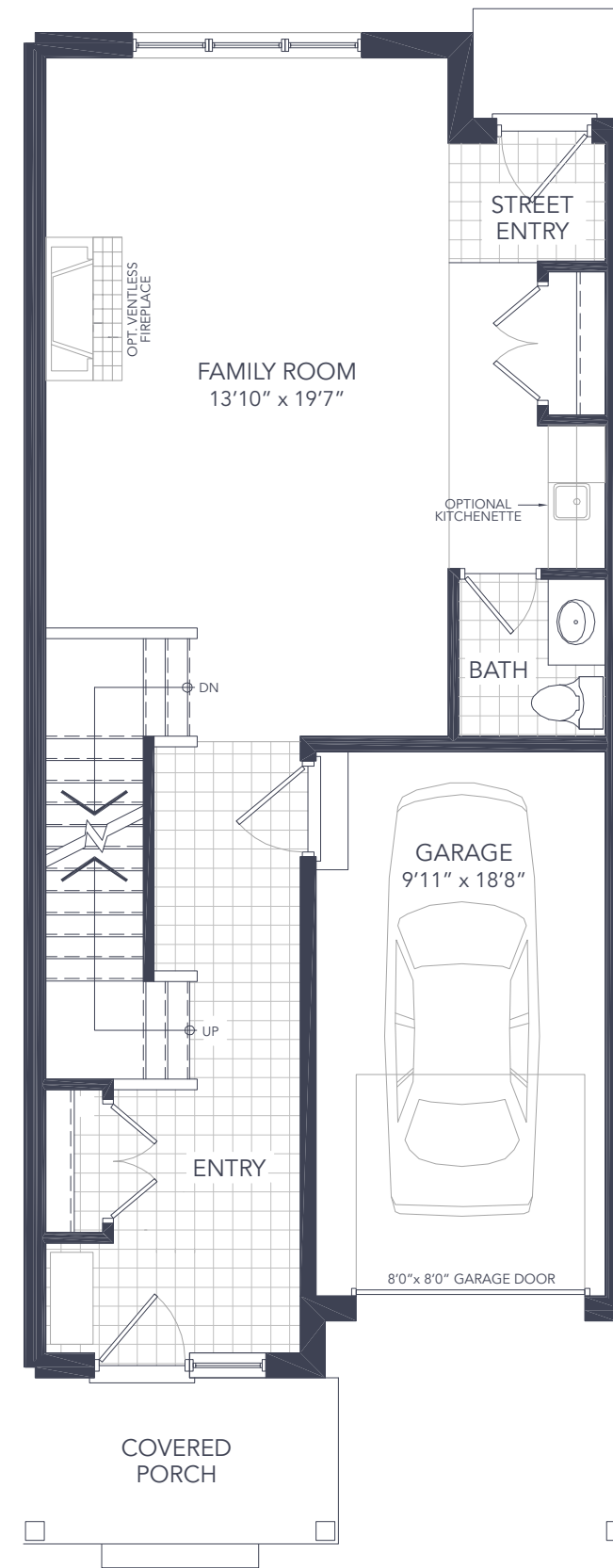
2620 SQUARE FEET



BASEMENT (Unfinished)

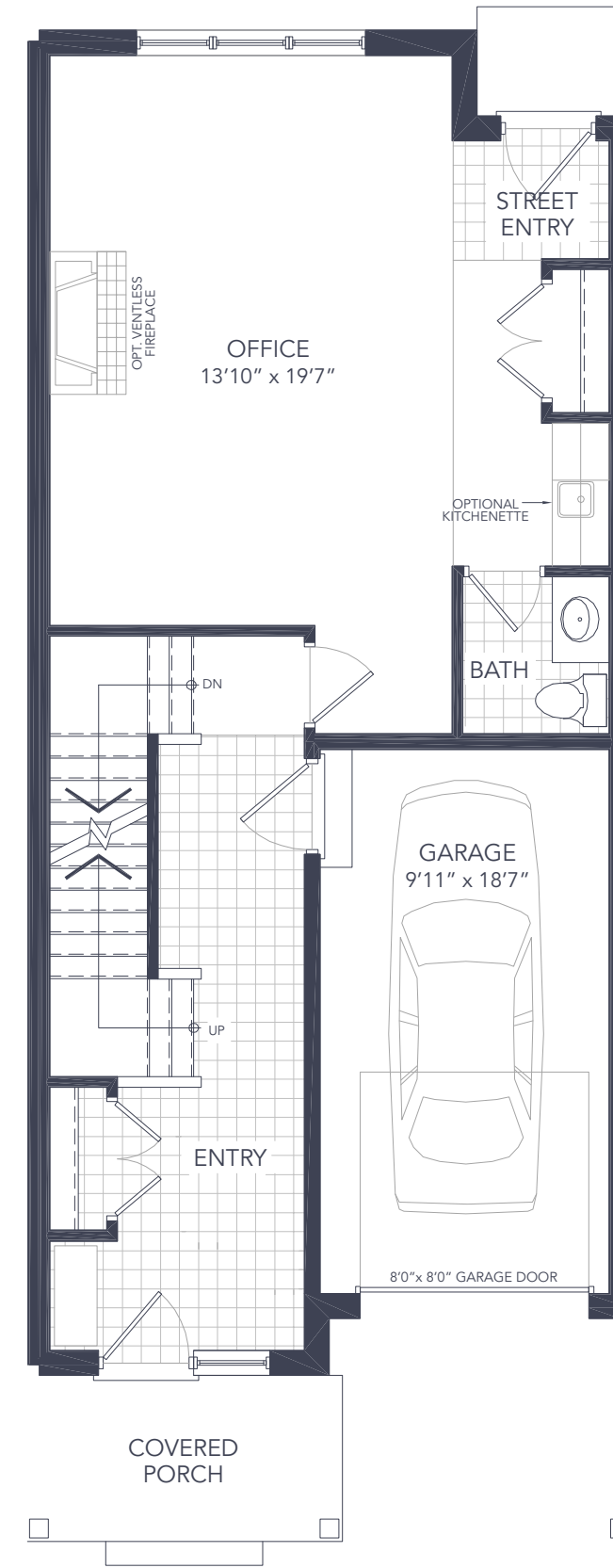


BASEMENT (Optional Finished)



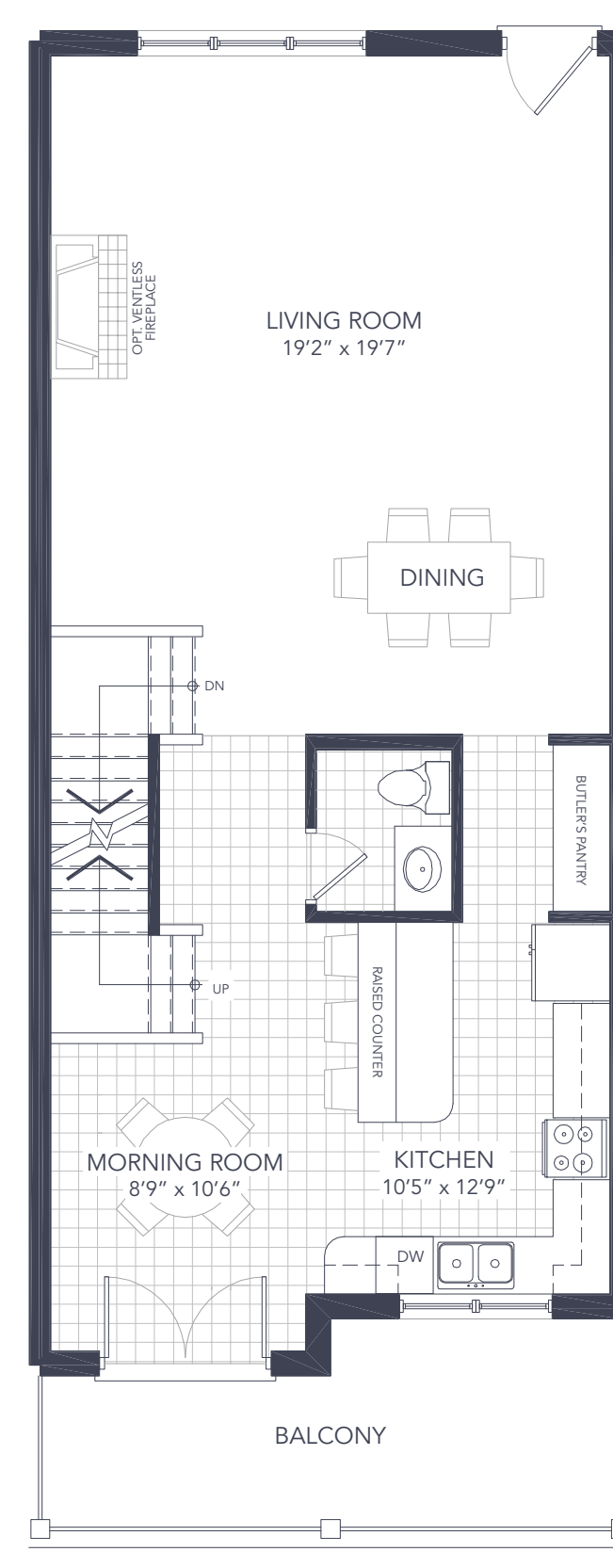
GROUND LEVEL

This level offers 2 handy entrances from the front and the rear with easy garage access and a powder room. The large sun-drenched Family Room has the option of adding a cozy fireplace or kitchenette.



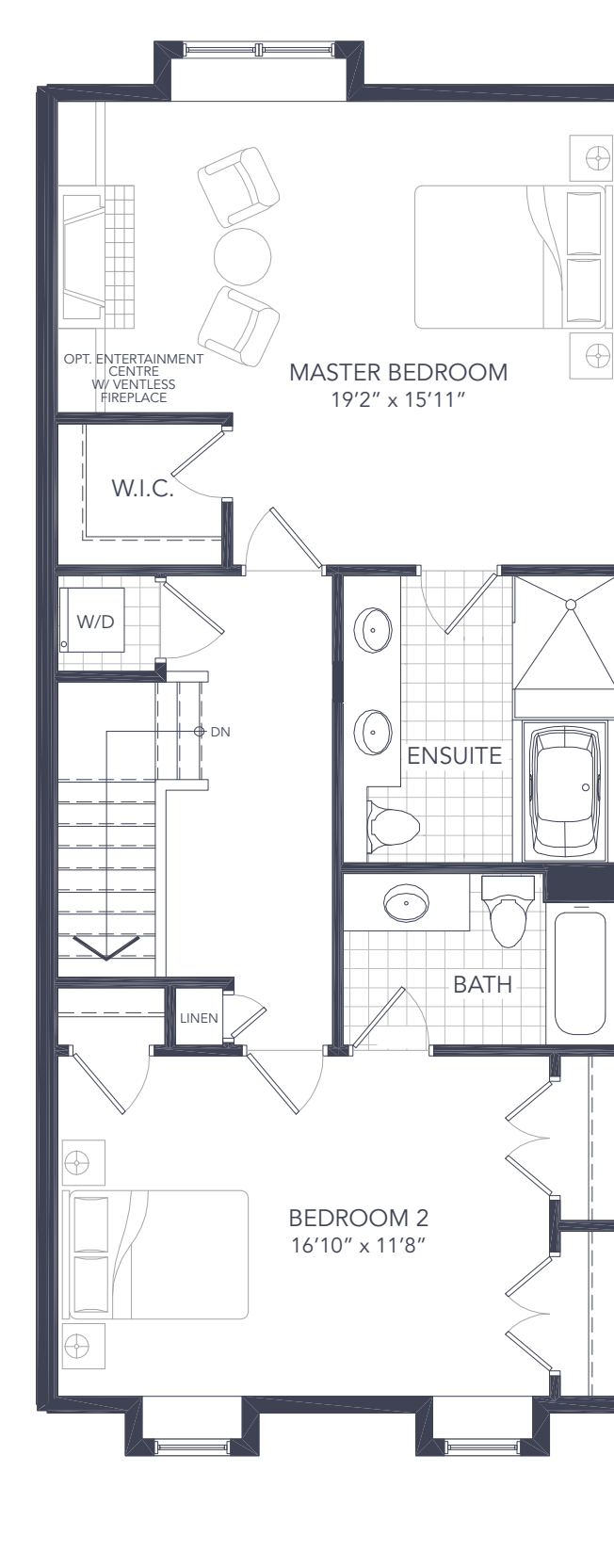
GROUND LEVEL (WORK OPTION)

Now your home business can have a professional image if you exercise this Live/Work option. A handy street entrance, closet, optional kitchenette and a powder room make work life easy, attractive and separate from your living spaces.



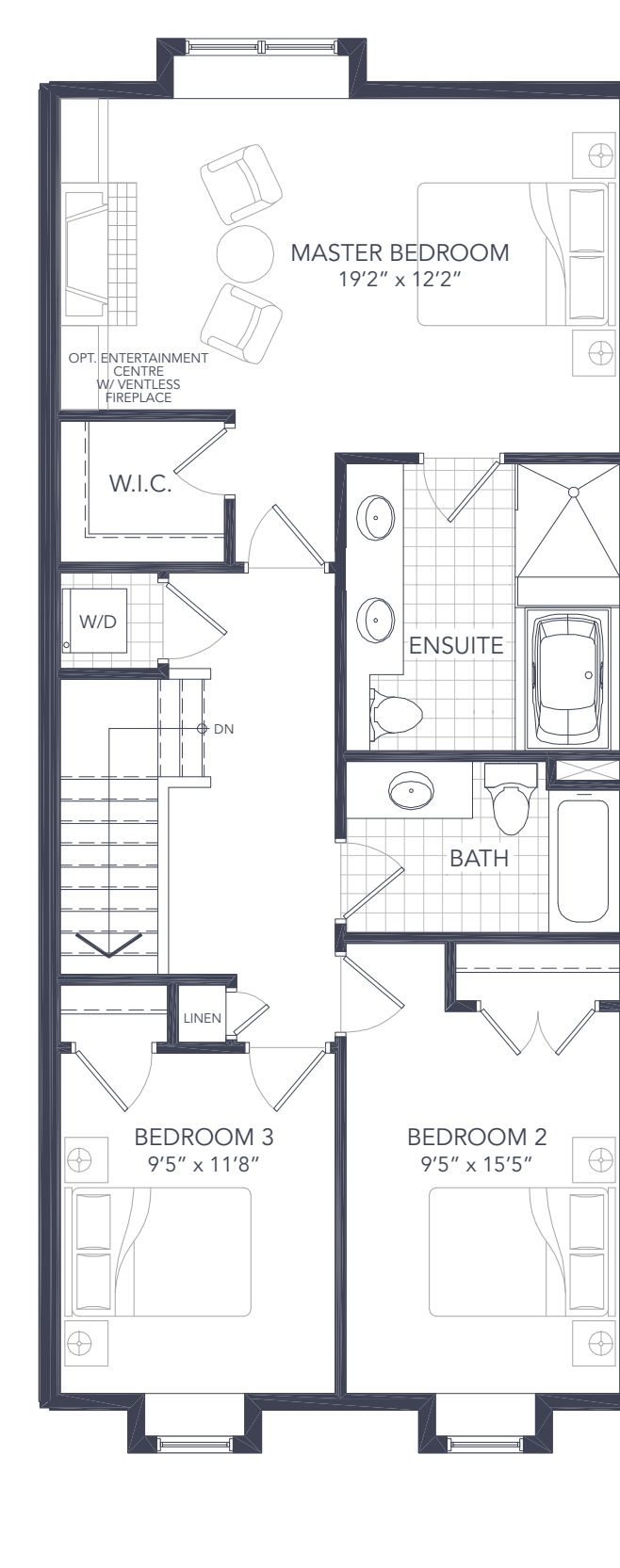
SECOND LEVEL

Combined living and dining areas, a gourmet kitchen with plenty of counter space, raised bar for breakfast, buffets or cocktails and a morning room for sun-drenched breakfasts. Entertaining and relaxing is a breeze on the grand balcony.



THIRD LEVEL (2 BEDROOM OPTION)

Step up to stylish private quarters with a luxurious two-bedroom layout option. The Master Bedroom offers a generous space with window-bench seating, a walk-in-closet and a 5-piece Ensuite. The second, large bedroom offers double closets and a 3-piece Ensuite.



THIRD LEVEL (3 BEDROOM OPTION)

If a traditional three-bedroom option is what you're looking for, this plan offers it all! The Master Bedroom offers a generous space with window-bench seating, a walk-in-closet and a 5-piece Ensuite. Two bedrooms share a main bath.